

HIGHLAND PARK I.S.D. PARENT SURVEY

May 9 - 17, 2016

N = 1,258 parents

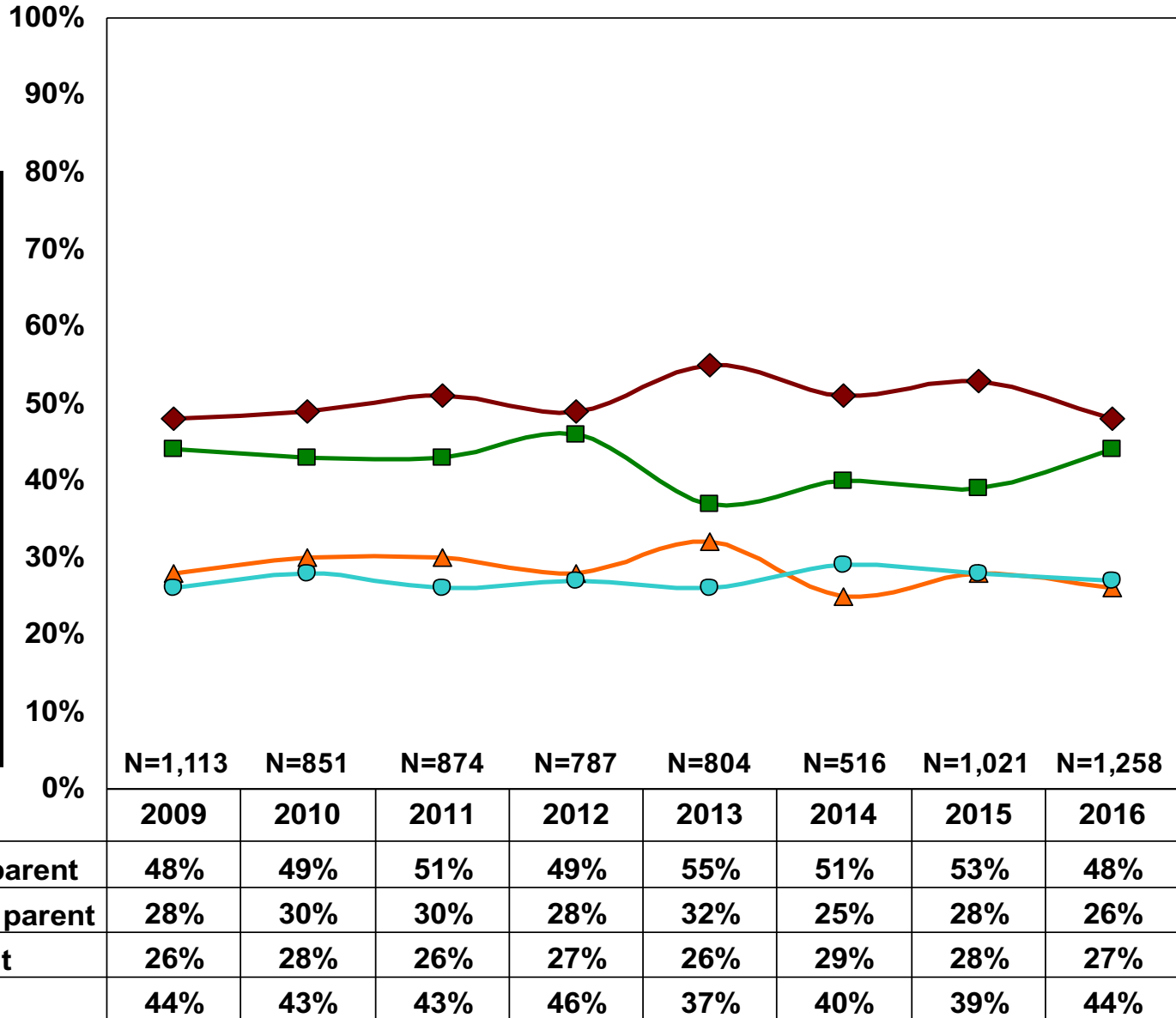
margin of error: \pm 2.8%

All results rounded to nearest whole percentage

***denotes less than one-half percent**

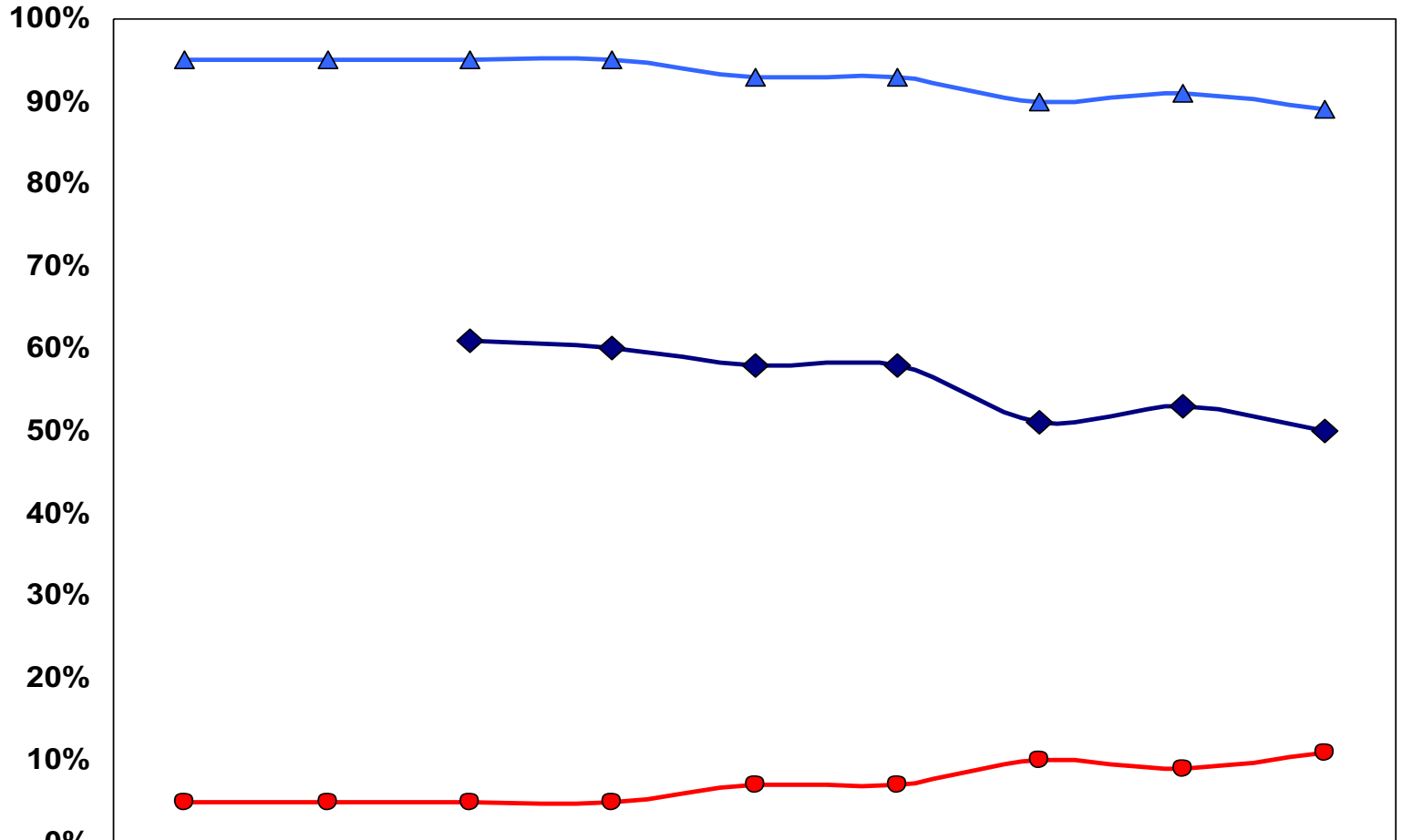
INTERVIEWS BY SCHOOL

	Interviews	Margin of error
Armstrong ES	128	± 8.7%
Bradfield ES	159	± 7.8%
Hyer ES	154	±7.9%
University Park ES	167	± 7.6%
All ES	605	± 4.0%
IS	326	± 5.4%
MS	344	± 5.3%
HS	548	± 4.2%



OVERALL SATISFACTION

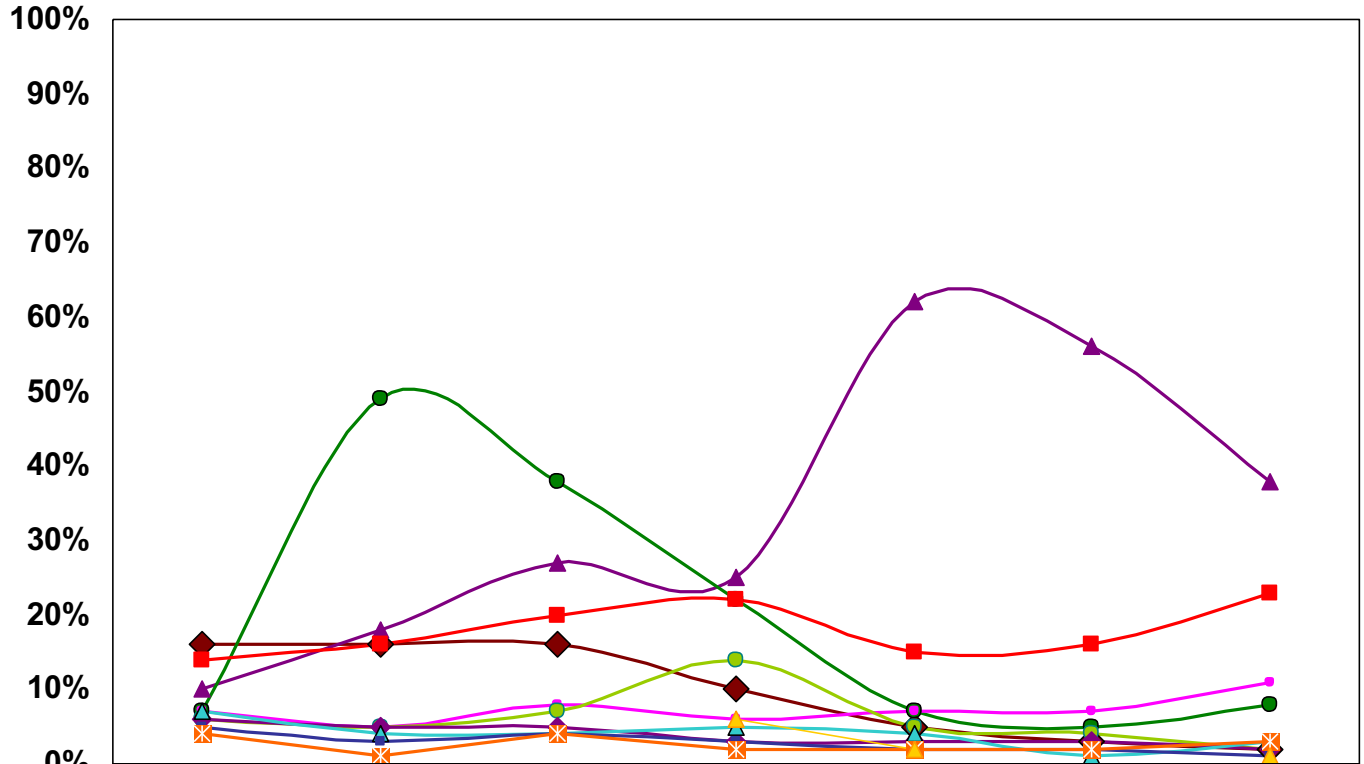
Q4. How satisfied or dissatisfied are you with the quality of education in the district?



	2008	2009	2010	2011	2012	2013	2014	2015	2016
◆ Very Satisfied	n/a	n/a	61%	60%	58%	58%	51%	53%	50%
▲ Total Satisfied	95%	95%	95%	95%	93%	93%	90%	91%	89%
● Total Dissatisfied	5%	5%	5%	5%	7%	7%	10%	9%	11%

MOST CRITICAL PROBLEM

Q5. In thinking about the school district as a whole, please tell us what you consider to be the district's most critical problem.

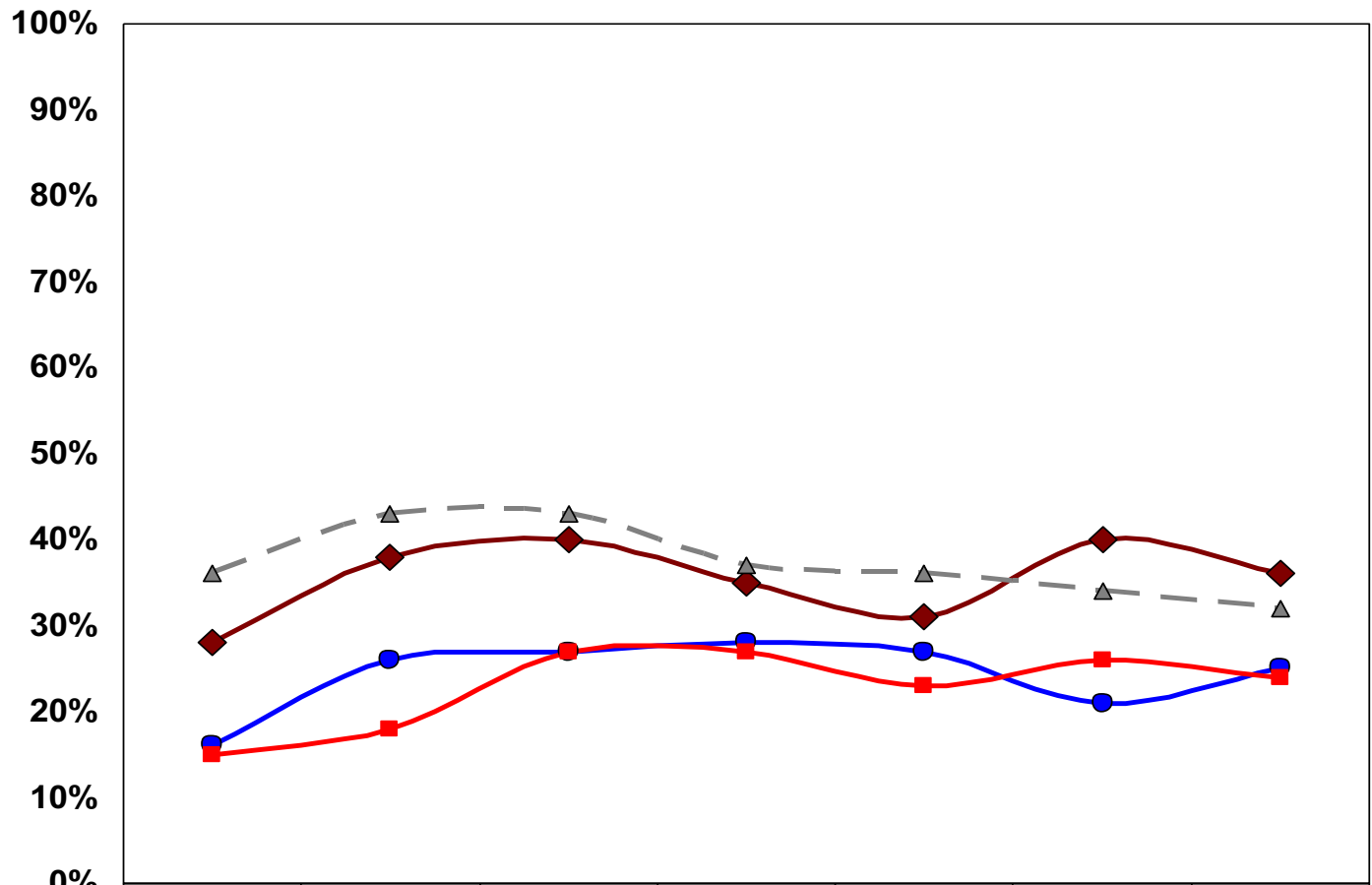


	2010	2011	2012	2013	2014	2015	2016
◆ Taxes / Robin Hood	16%	16%	16%	10%	5%	3%	2%
▲ Growth / class size / crowding	10%	18%	27%	25%	62%	56%	38%
● Money / funding / budget	7%	49%	38%	22%	7%	5%	8%
■ Teachers / Admin	14%	16%	20%	22%	15%	16%	23%
● Easy / Weak Curriculum	7%	5%	8%	6%	7%	7%	11%
● Less TAKS / STAAR	6%	5%	7%	14%	5%	4%	2%
◆ More language classes	6%	5%	5%	3%	3%	3%	2%
▲ Discipline	7%	4%	4%	5%	4%	1%	3%
■ Social / academic pressure	5%	3%	4%	3%	2%	2%	1%
✕ Need of tutoring	4%	1%	4%	2%	2%	2%	3%
▲ Safety / Security	Not mentioned	Not mentioned	Not mentioned	6%	2%	*	1%

Responses can fall into more than one category.

GREATEST STRENGTH

Q6. In thinking about the school district as a whole, please tell us what you consider to be the district's greatest strength.

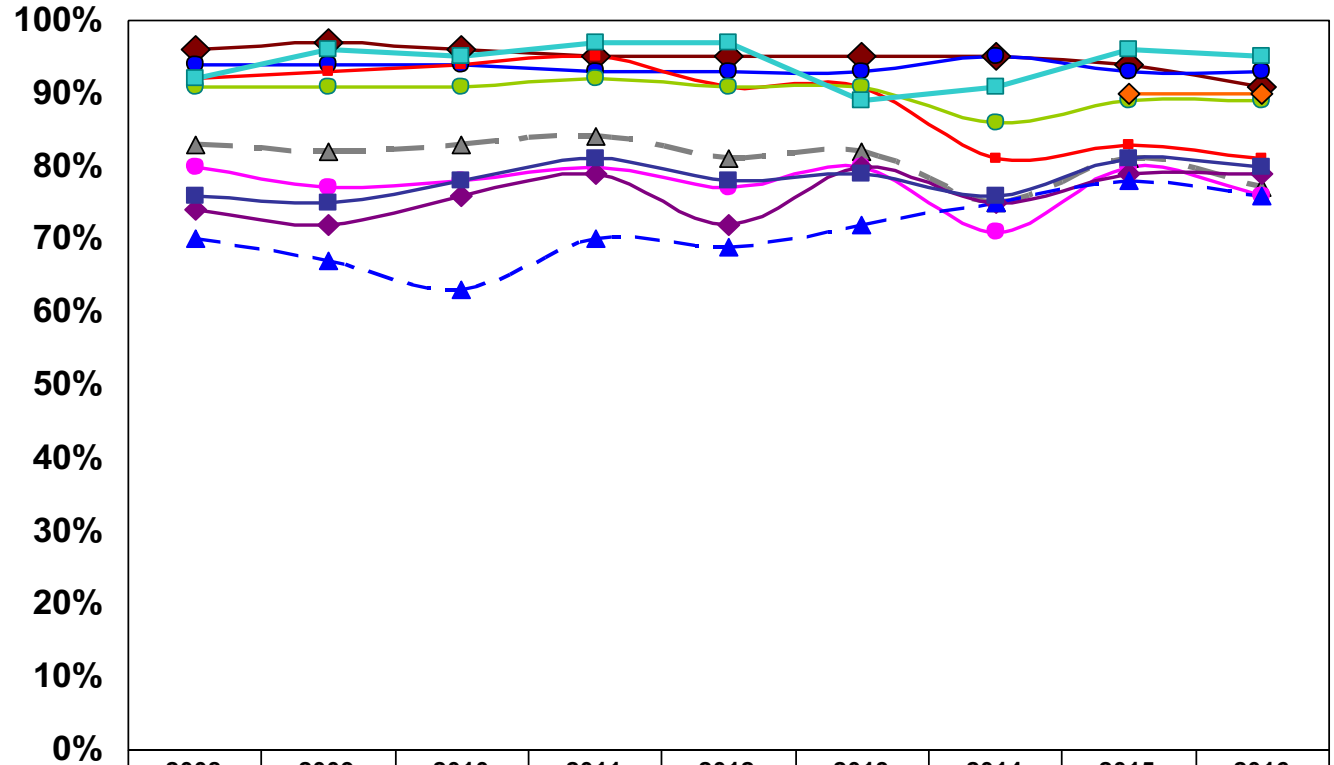


	2010	2011	2012	2013	2014	2015	2016
◆ Teachers / staff	28%	38%	40%	35%	31%	40%	36%
▲ Parental involvement	36%	43%	43%	37%	36%	34%	32%
● Community involvement	16%	26%	27%	28%	27%	21%	25%
■ Academics / education	15%	18%	27%	27%	23%	26%	24%

Responses can fall into more than one category.

SATISFACTION WITH DISTRICT ACTIONS

Q7. Thinking about the school district in general, how satisfied are you with the work the school district has done in the following areas?

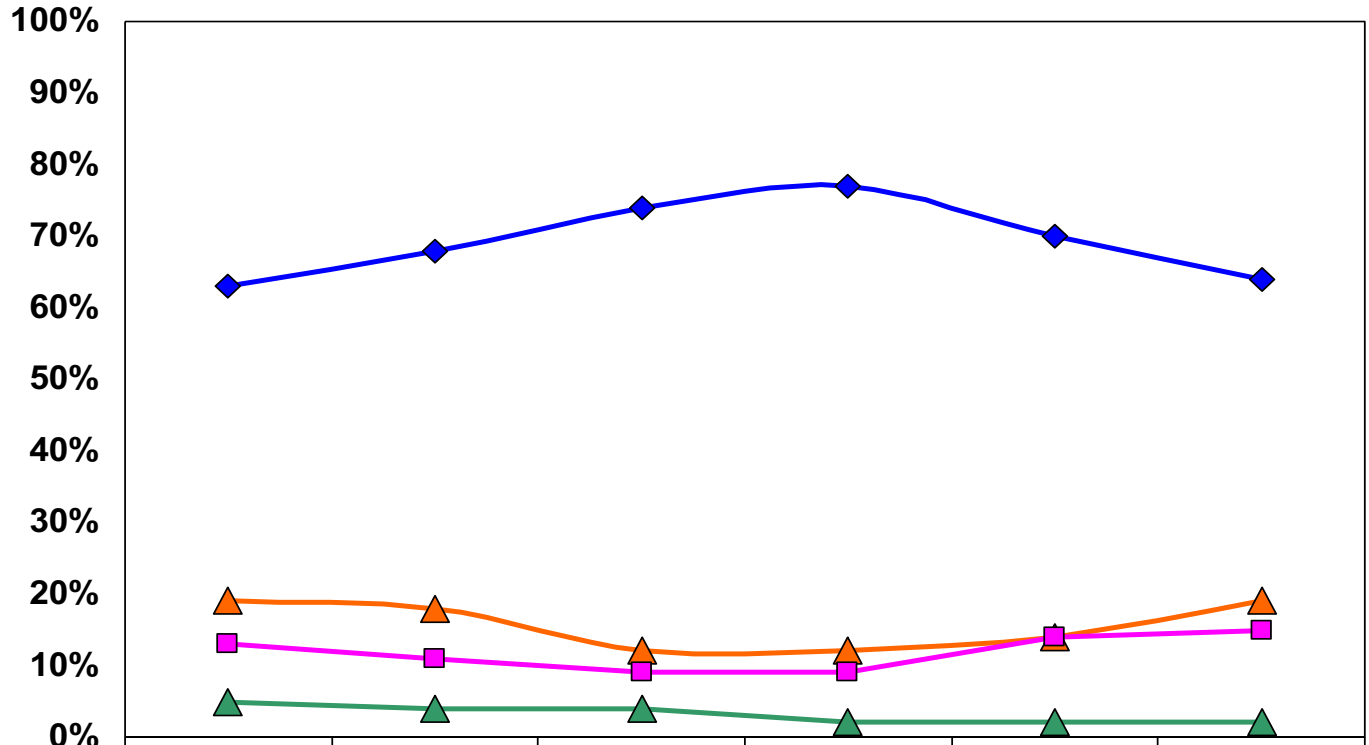


% Total satisfied

	2008	2009	2010	2011	2012	2013	2014	2015	2016
Communicating with residents	96%	97%	96%	95%	95%	95%	95%	94%	91%
Addressing concerns of parents	83%	82%	83%	84%	81%	82%	75%	81%	77%
Citizen involvement	94%	94%	94%	93%	93%	93%	95%	93%	93%
Planning for future needs	92%	93%	94%	95%	91%	91%	81%	83%	81%
Instructional needs of all	80%	77%	78%	80%	77%	80%	71%	80%	76%
Computer technology experience	91%	91%	91%	92%	91%	91%	86%	89%	89%
Parent education opportunities	74%	72%	76%	79%	72%	80%	75%	79%	79%
Nutritious food choices	70%	67%	63%	70%	69%	72%	75%	78%	76%
Students become persons of character	76%	75%	78%	81%	78%	79%	76%	81%	80%
Preparing students for college/careers	n/a	n/a	n/a	n/a	n/a	n/a	n/a	90%	90%
Providing safe campuses	92%	96%	95%	97%	97%	89%	91%	96%	95%

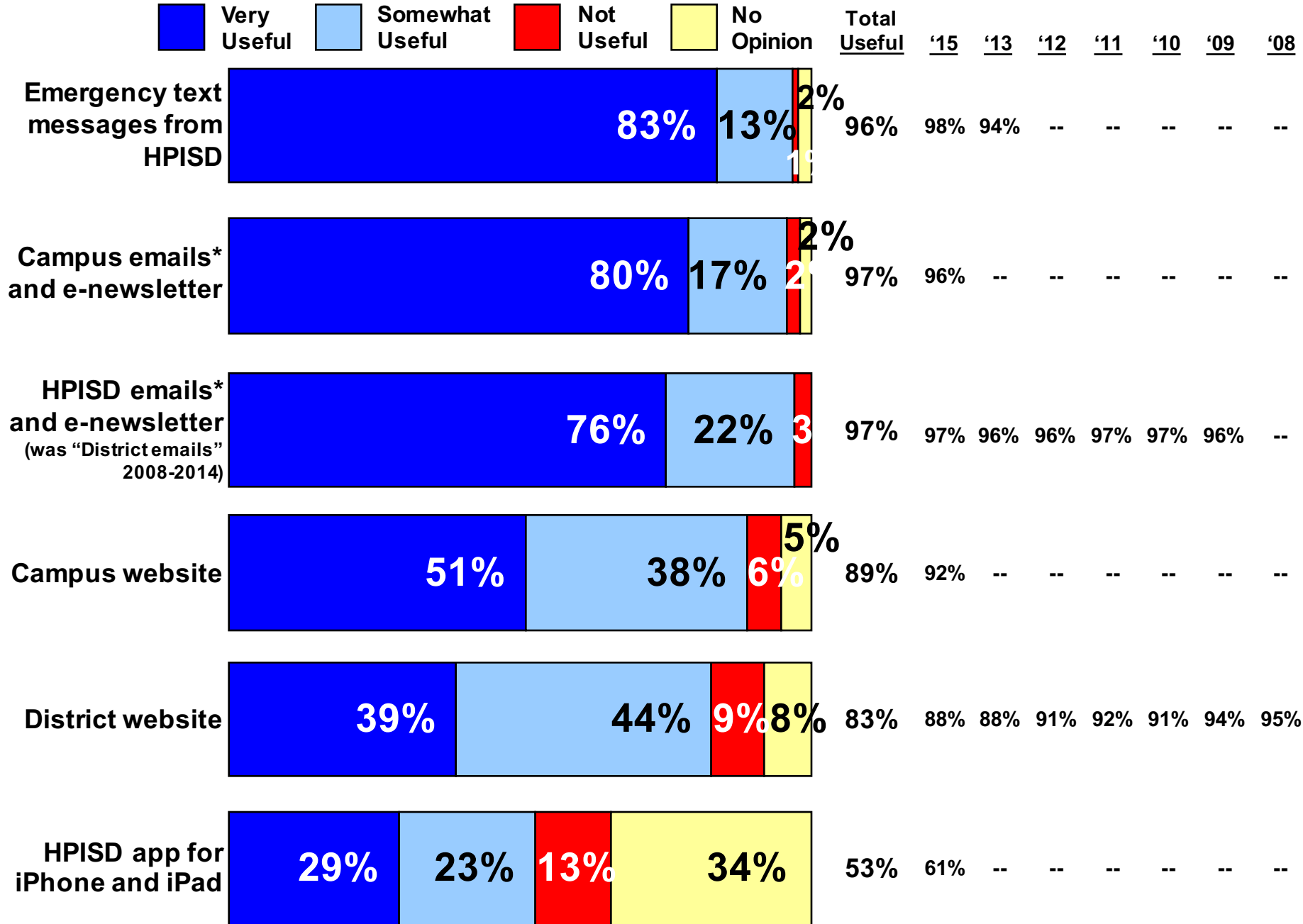
MOST IMPORTANT

Q9. Which one of the following is most important to you?



	2011	2012	2013	2014	2015	2016
◆ Maintaining low class sizes	63%	68%	74%	77%	70%	64%
▲ Maintaining competitive salaries	19%	18%	12%	12%	14%	19%
▲ Maintaining extracurricular activities at current levels	5%	4%	4%	2%	2%	2%
■ Maintaining a variety of elective and extracurricular courses	13%	11%	9%	9%	14%	15%

INFORMATION FROM PUBLICATIONS - I



*Emails was "e-blasts" in 2015.

INFORMATION FROM PUBLICATIONS - II

